



INTEQ

Company : Karoon Gas Pty Ltd

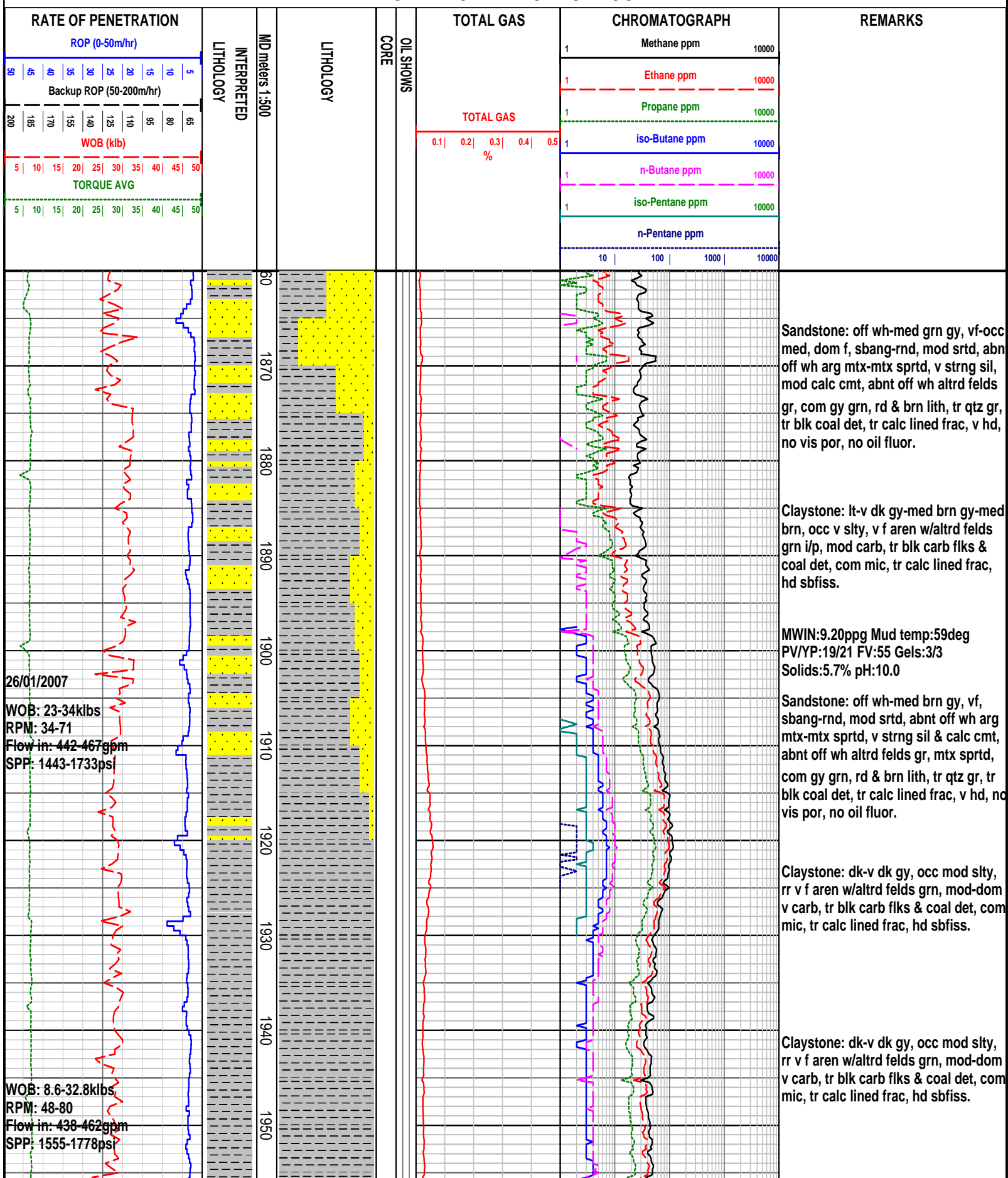
Well : Megascolides 2

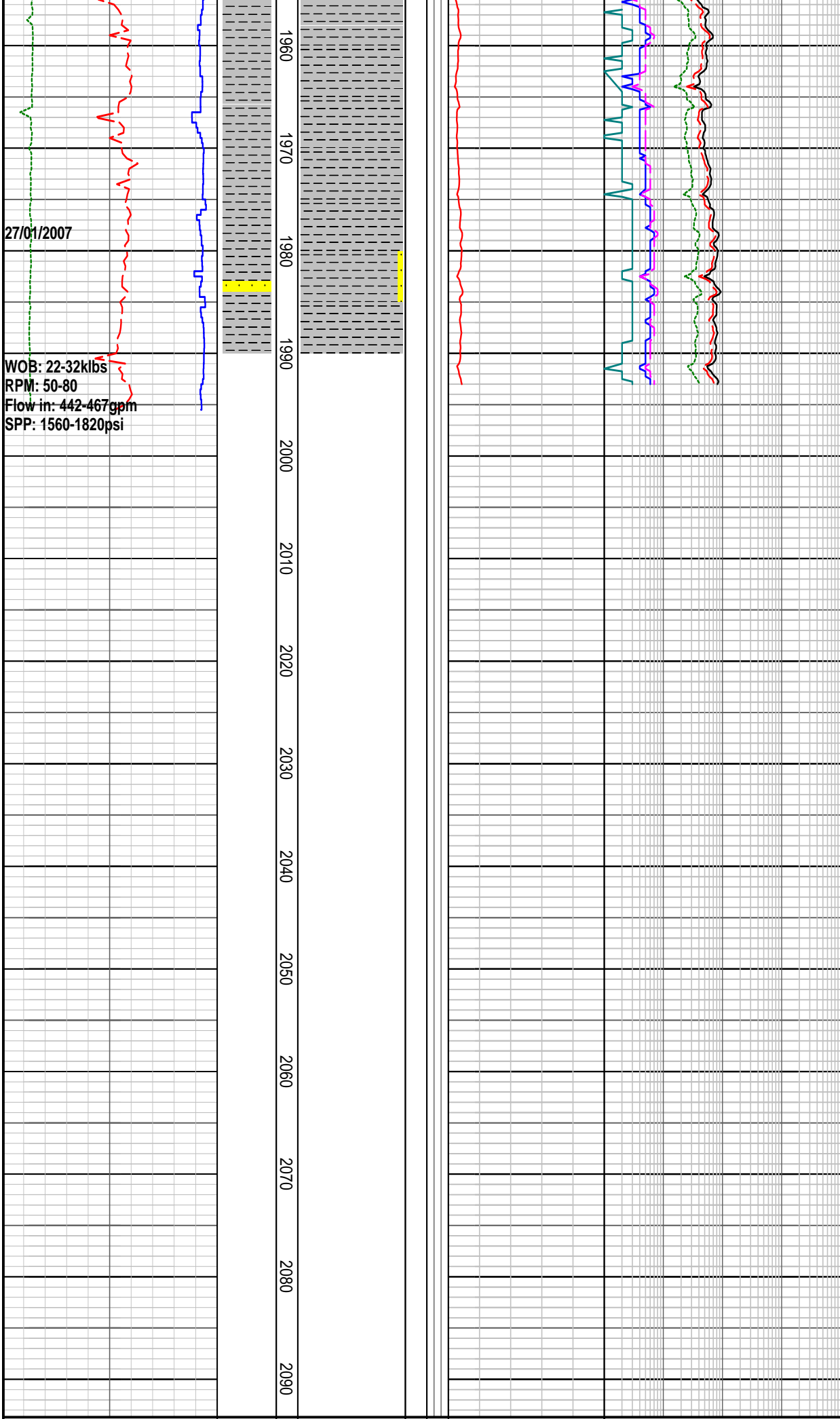
Interval : 1860.00 - 2093.70 meters

Created : 27/Jan/2007 5:32:03 AM



FORMATION EVALUATION LOG





27/01/2007

WOB: 22-32klbs
RPM: 50-80
Flow in: 442-467gpm
SPP: 1560-1820psi

Claystone: dk-v dk gy, rr med brn gy,occ mod slty, mod-dom v carb, tr black carb flicks, coaly det, com micmic, rr calc lnd fract, hd-sbfiss

MWIN:9.30ppg Mud temp:59.2deg
PV/YP:20/22 FV:56
Gels:4/5
Solids:6.4% pH:9.8

Sandstone: off wh-med brn gy, vf, sbang-rnd, mod srtd, abnt off wh arg mtx-mtx sprtd, abnt off wh altrd felds gr, no shows

FORMATION EVALUATION LOG																			
RATE OF PENETRATION					INTERPRETED LITHOLOGY	MD meters 1:500	LITHOLOGY	CORE	OIL SHOWS	TOTAL GAS					CHROMATOGRAPH				REMARKS
ROP (0-50m/hr)										TOTAL GAS					Methane ppm				
Backup ROP (50-200m/hr)										TOTAL GAS					Ethane ppm				
WOB (klb)										TOTAL GAS					Propane ppm				
TORQUE AVG										TOTAL GAS					iso-Butane ppm				
										TOTAL GAS					n-Butane ppm				
										TOTAL GAS					iso-Pentane ppm				
										TOTAL GAS					n-Pentane ppm				
										TOTAL GAS									
					TOTAL GAS														